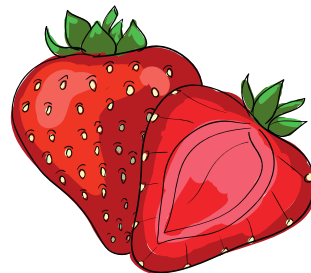
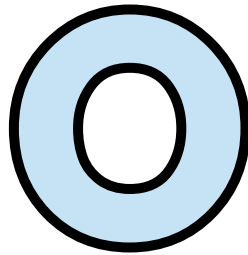
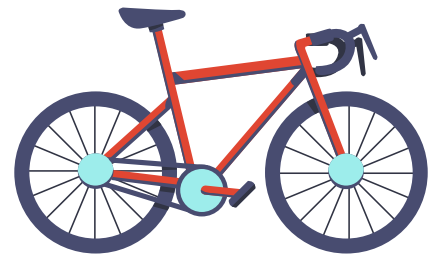
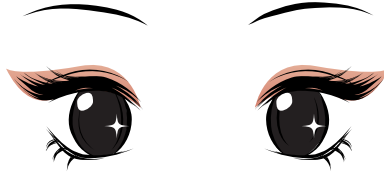


PRVI GLAS (O-Š)



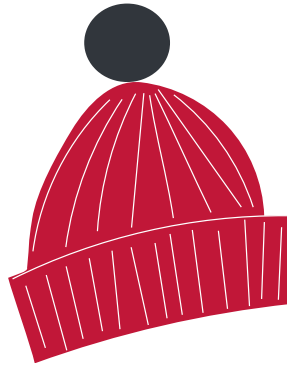
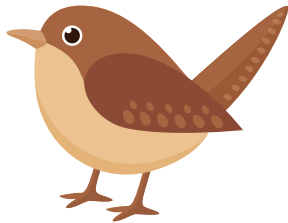
BESEDE, KI SE ZAČNEJO NA GLAS **O**, POVEŽI S ČRKO.



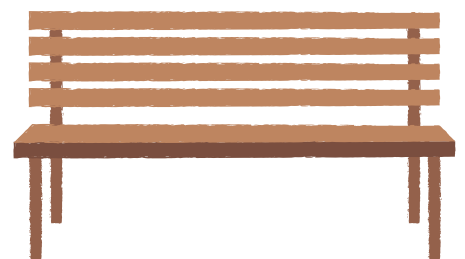
PRVI GLAS (O-Š)



BESEDE, KI SE ZAČNEJO NA GLAS **P**, POVEŽI S ČRKO.



P



?



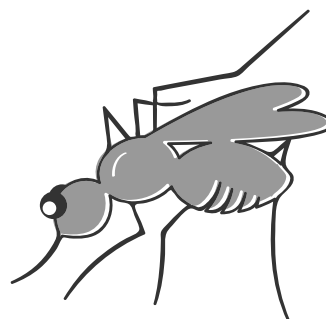
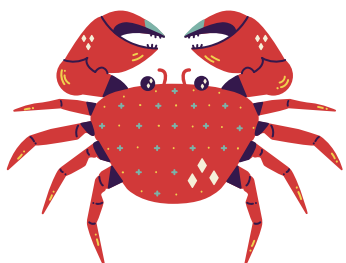
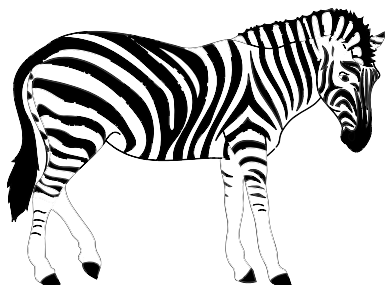
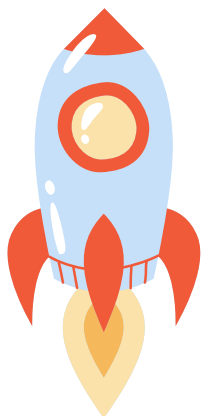
PRVI GLAS (O-Š)



BESEDE, KI SE ZAČNEJO NA GLAS **R**, POVEŽI S ČRKO.



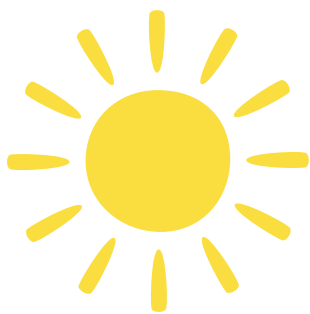
R



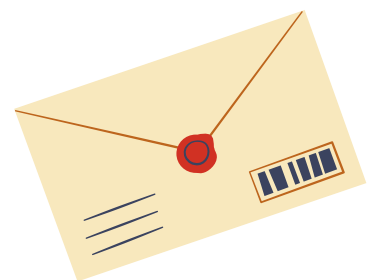
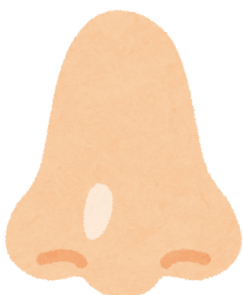
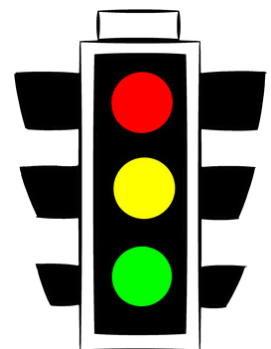
PRVI GLAS (O-Š)



BESEDE, KI SE ZAČNEJO NA GLAS S, POVEŽI S ČRKO.



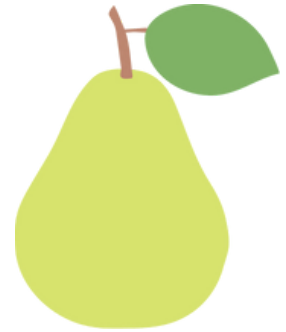
S



PRVI GLAS (O-Š)



BESEDE, KI SE ZAČNEJO NA GLAS Š, POVEŽI S ČRKO.



Š

